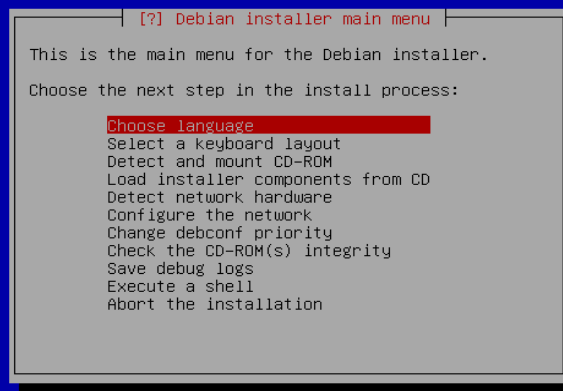
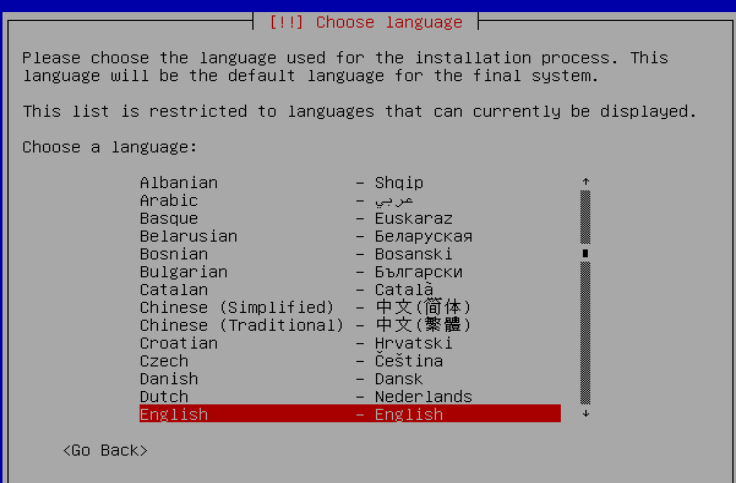


01.png



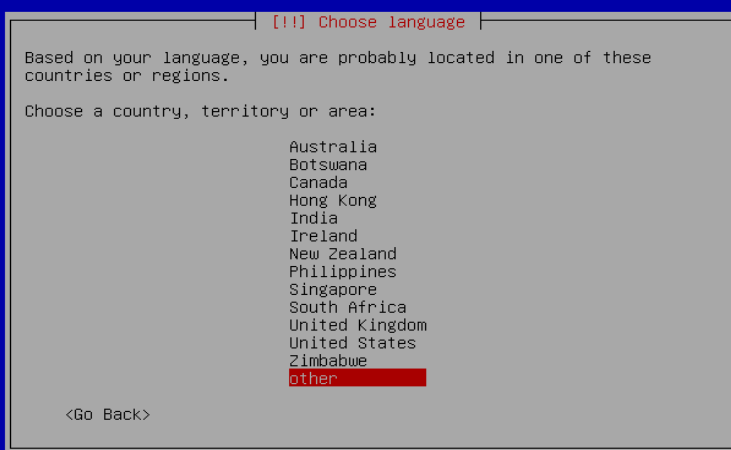
<Tab> moves between items; <Space> selects; <Enter> activates buttons

02.png



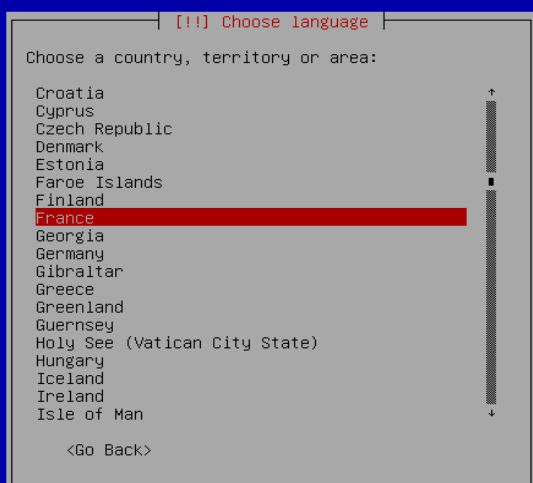
<Tab> moves between items; <Space> selects; <Enter> activates buttons

03.png



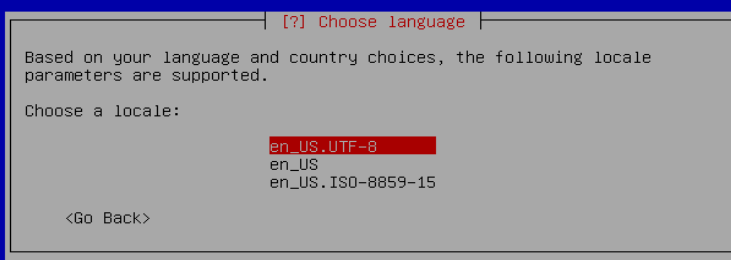
<Tab> moves between items; <Space> selects; <Enter> activates buttons

04.png



<Tab> moves between items; <Space> selects; <Enter> activates buttons

05.png



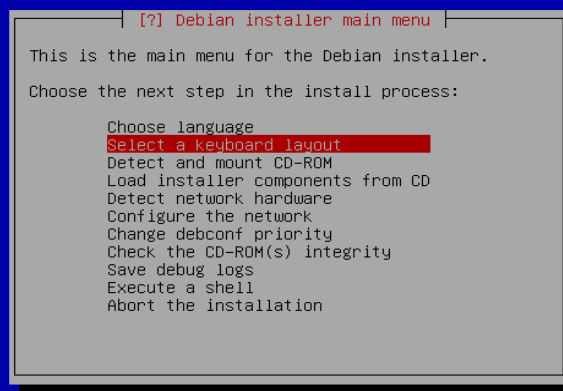
<Tab> moves between items; <Space> selects; <Enter> activates buttons

06.png



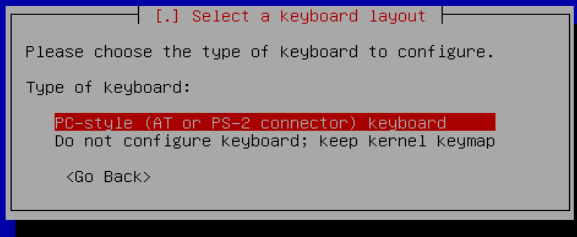
<Tab> moves between items; <Space> selects; <Enter> activates buttons

07.png



<Tab> moves between items; <Space> selects; <Enter> activates buttons

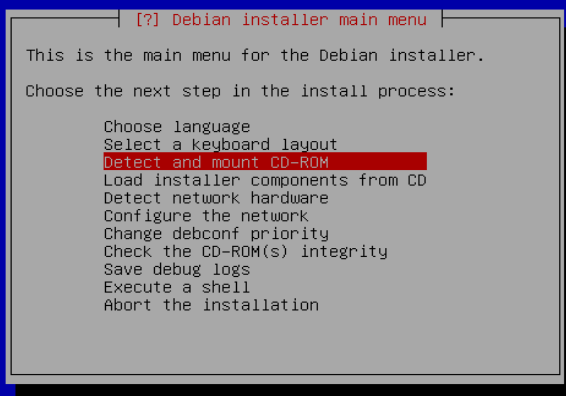
08.png



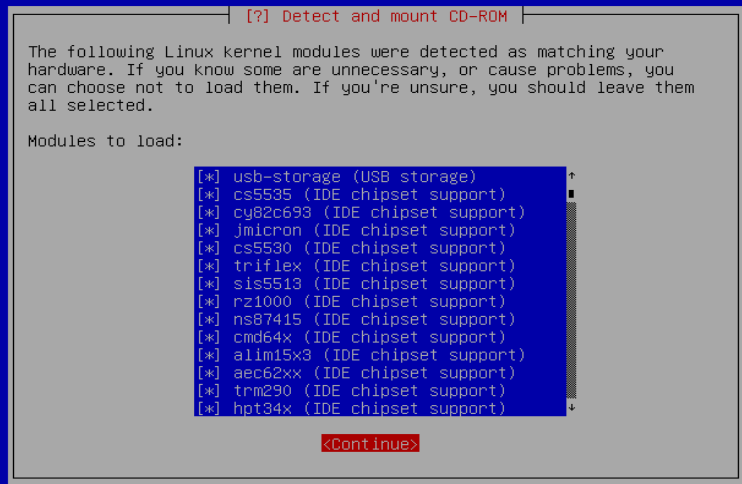
<Tab> moves between items; <Space> selects; <Enter> activates buttons
09.png



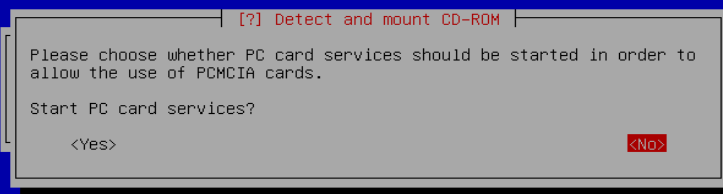
<Tab> moves between items; <Space> selects; <Enter> activates buttons
10.png



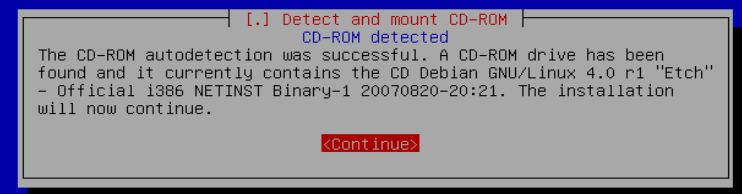
<Tab> moves between items; <Space> selects; <Enter> activates buttons
11.png



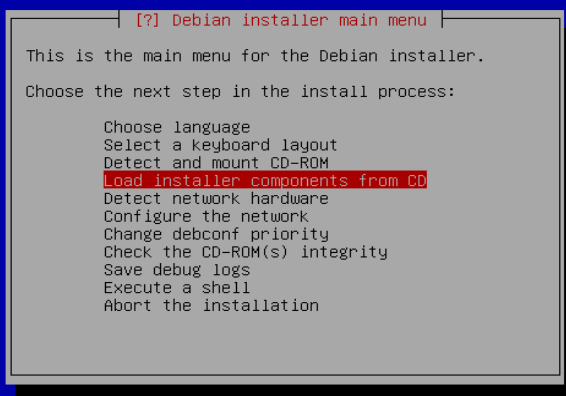
<Tab> moves between items; <Space> selects; <Enter> activates buttons
12.png



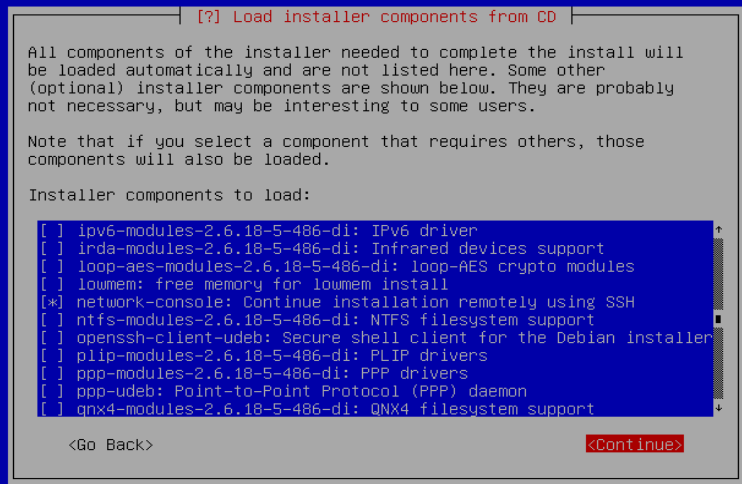
<Tab> moves between items; <Space> selects; <Enter> activates buttons
13.png



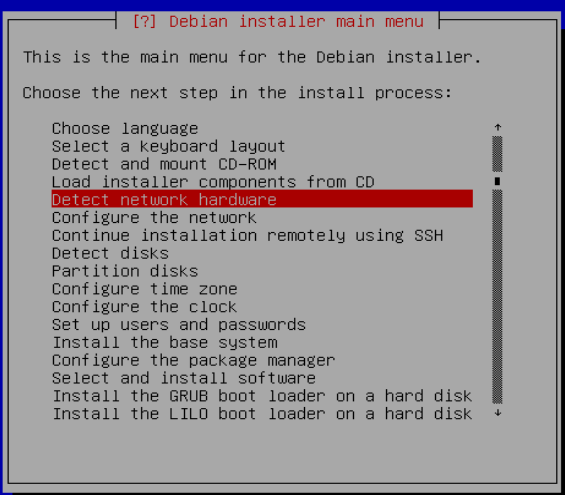
<Tab> moves between items; <Space> selects; <Enter> activates buttons
14.png



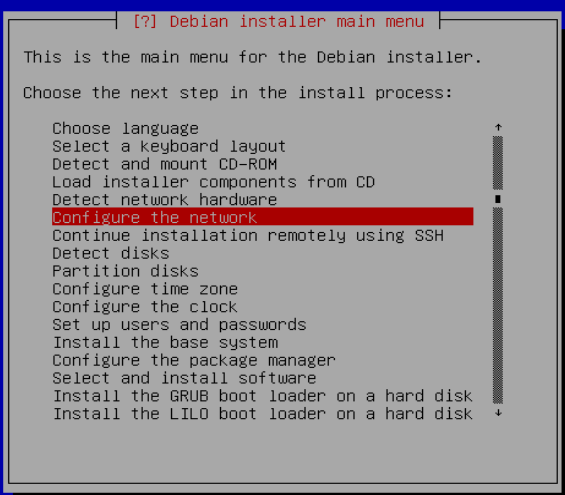
<Tab> moves between items; <Space> selects; <Enter> activates buttons
15.png



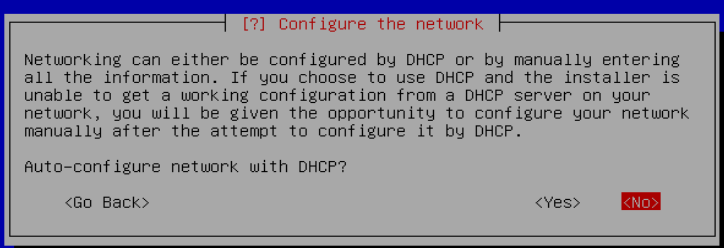
<Tab> moves between items; <Space> selects; <Enter> activates buttons
16.png



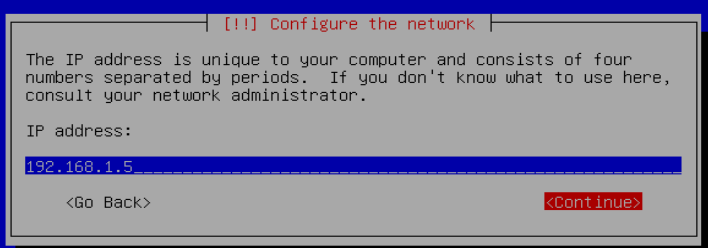
<Tab> moves between items; <Space> selects; <Enter> activates buttons
17.png



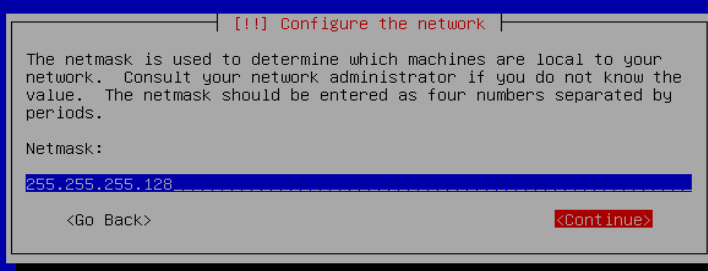
<Tab> moves between items; <Space> selects; <Enter> activates buttons
18.png



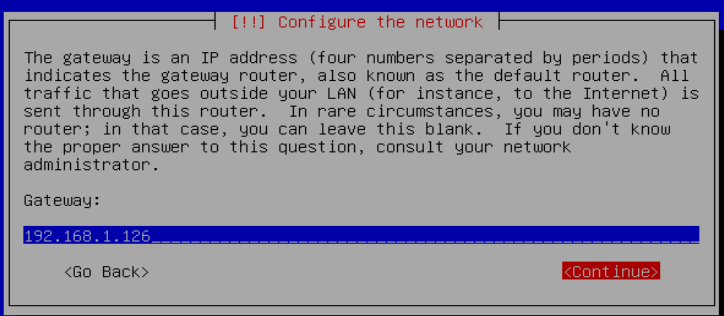
<Tab> moves between items; <Space> selects; <Enter> activates buttons
19.png



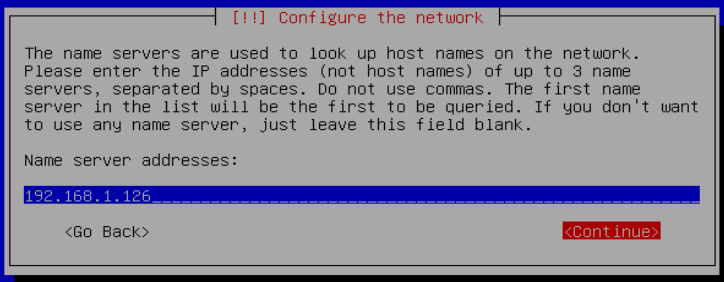
<Tab> moves between items; <Space> selects; <Enter> activates buttons
20.png



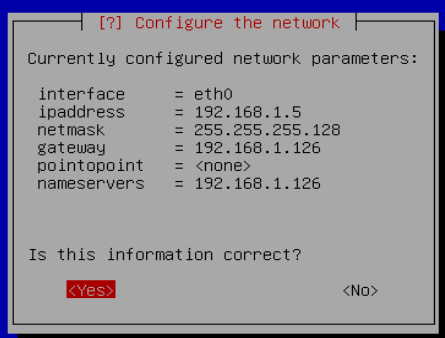
<Tab> moves between items; <Space> selects; <Enter> activates buttons
21.png



<Tab> moves between items; <Space> selects; <Enter> activates buttons
22.png



<Tab> moves between items; <Space> selects; <Enter> activates buttons
23.png



<Tab> moves between items; <Space> selects; <Enter> activates buttons
24.png

[!] Configure the network

Please enter the hostname for this system.

The hostname is a single word that identifies your system to the network. If you don't know what your hostname should be, consult your network administrator. If you are setting up your own home network, you can make something up here.

Hostname:

debian-1

<Go Back>

<Continue>

<Tab> moves between items; <Space> selects; <Enter> activates buttons

25.png

[!] Configure the network

The domain name is the part of your Internet address to the right of your host name. It is often something that ends in .com, .net, .edu, or .org. If you are setting up a home network, you can make something up, but make sure you use the same domain name on all your computers.

Domain name:

foo.bar

<Go Back>

<Continue>

<Tab> moves between items; <Space> selects; <Enter> activates buttons

26.png

[?] Debian installer main menu

This is the main menu for the Debian installer.

Choose the next step in the install process:

- Choose language
- Select a keyboard layout
- Detect and mount CD-ROM
- Load installer components from CD
- Detect network hardware
- Configure the network
- Continue installation remotely using SSH
- Detect disks
- Partition disks
- Configure time zone
- Configure the clock
- Set up users and passwords
- Install the base system
- Configure the package manager
- Select and install software
- Install the GRUB boot loader on a hard disk
- Install the LILO boot loader on a hard disk

<Tab> moves between items; <Space> selects; <Enter> activates buttons

27.png

[!] Continue installation remotely using SSH

You need to set a password for remote access to the Debian installer. A malicious or unqualified user with access to the installer can have disastrous results, so you should take care to choose a password that is not easy to guess. It should not be a word found in the dictionary, or a word that could be easily associated with you, like your middle name.

This password is used only by the Debian installer, and will be discarded once you finished the installation.

Remote installation password:

<Continue>

<Tab> moves between items; <Space> selects; <Enter> activates buttons

28.png

[!] Continue installation remotely using SSH

Please enter the same remote installation password again to verify that you have typed it correctly.

Re-enter password to verify:

<Continue>

<Tab> moves between items; <Space> selects; <Enter> activates buttons

29.png

[!] Continue installation remotely using SSH

Start SSH

To continue the installation, please use an SSH client to connect to the IP address 192.168.1.5 and log in as the "installer" user.

The fingerprint of this SSH server's host key is:
91:f1:59:90:66:69:4e:cd:aa:bf:d2:f4:42:ee:c8:73

Please check this carefully against the fingerprint reported by your SSH client.

<Continue>

<Tab> moves between items; <Space> selects; <Enter> activates buttons

30.png